


Messiah Lutheran Church

Lenten Worship

March 13, 2024 7:00pm

A photograph of an adult hand holding a child's hand in a field of tall grass at sunset. The sun is low on the horizon, creating a warm, golden glow. The child is seen from the back, wearing a dark shirt. The adult's arm is visible on the left, holding the child's hand. The background shows a field of tall grass and distant hills under a clear sky.

GUIDED *to the* CROSS

Week 4

GUIDED TO TRUST

*"The saying is trustworthy
and deserving of full acceptance,
that Christ Jesus came into the world
to save sinners,
of whom I am the foremost."
1 Timothy 1:15*

WE PREPARE OUR HEARTS AND MINDS FOR LENT

Lent is a season when we are guided to the cross. Throughout this holy time, we are drawn to Calvary to live in forgiveness, hope, love, peace, trust and perseverance. Each week, the services in this series reveal how Christ and His cross serve as examples for us of how to live our lives for and through our crucified Lord and Savior. Tonight in word and song, we are drawn to Calvary to deepen our trust. We contemplate how to live lives of trust in God, who entrusted His Son, Jesus, on the cross for our sake.

THE GREETING THE OPENING HYMN "Glory Be to Jesus" LSB 433



1 Glo - ry be to Je - sus, Who in bit - ter pains
2 Grace and life e - ter - nal In that blood I find;
3 Blest through end - less a - ges Be the pre - cious stream
4 A - bel's blood for ven - geance Plead - ed to the skies;
6 Lift we, then, our voic - es, Swell the might - y flood;



Poured for me the life - blood From His sa - cred veins!
Blest be His com - pas - sion, In - fi - nite - ly kind!
Which from end - less tor - ment Did the world re - deem!
But the blood of Je - sus For our par - don cries.
Loud - er still and loud - er Praise the pre - cious blood!

THE INVOCATION AND LITANY

P The grace of our Lord Jesus Christ, the love of God the Father, and the fellowship of the Holy Spirit be with you all.

C Amen.

P We place our trust in many things and in many people, yet often that trust is misplaced. Things do not work out as we planned, and people may fail us.

C Where do we place our trust?

P "Trust in the Lord with all your heart, and do not lean on your own understanding. In all your ways acknowledge Him, and He will make straight your paths."

C How do we know that the Lord can be trusted?

P "He who did not spare His own Son but gave Him up for us all, how will He not also with Him graciously give us all things?" God sent His own Son to suffer and die on the cross for the sake of our salvation. In Him, we place our trust, and He will never fail us.

C Lord, set the cross before us to guide us in trusting You.

THE CONFESSION AND ANNOUNCEMENT OF FORGIVENESS

- P** As we come together to worship in the presence of God, we confess our sins and seek God's grace and mercy. You are invited to kneel.
- C** **Almighty God, You have called us to trust in You and to acknowledge You in all our ways. Yet we often fail to trust You as we should. We would rather acknowledge our own desires instead of Your will. We do not love others as we should. We follow the temptations of the world around us instead of walking in Your ways. Have mercy on us and forgive our sins.**
- P** The apostle Paul wrote, "The saying is trustworthy and deserving of full acceptance, that Christ Jesus came into the world to save sinners." God has had mercy on us and sent his Son to be our Savior. I announce to you that your sins are forgiven in the name of the Father and of the Son and of the Holy Spirit. Amen.
- C** **Lord, lead us to walk in Your ways and to trust You in all things.**

THE COLLECT

- P** The peace of the Lord be with you.
- C** **And also with you.**
- P** Let us pray. Almighty God, we place our trust in friends and family, in political leaders and authority figures. Yet sometimes we are disappointed by those in whom we trust; sometimes our trust is misplaced. We trust in You for our eternal salvation through faith in Jesus our Savior.
- C** **Help us by Your Spirit to trust You daily in all things and to turn to You with prayer and praise in all of the circumstances of our lives. You have sent Your Son to be our Savior, and You will never fail us. Set his cross always before us to guide us in trusting You. Hear our prayer, and accept our praise in Jesus' name. Amen.**

THE OLD TESTAMENT LESSON Proverbs 3:5-6

Trust in the Lord with all your heart, and do not lean on your own understanding. In all your ways acknowledge him, and he will make straight your paths.

THE EPISTLE LESSON 1 Timothy 1:15-17

The saying is trustworthy and deserving of full acceptance, that Christ Jesus came into the world to save sinners, of whom I am the foremost. But I received mercy for this reason, that in me, as the foremost, Jesus Christ might display his perfect patience as an example to those who were to believe in him for eternal life. To the King of the ages, immortal, invisible, the only God, be honor and glory forever and ever. Amen.

- P** This is the Word of the Lord.
- C** **Thanks be to God.**

THE GOSPEL VERSE "Christ Be My Leader" LSB 861



I'll think upon Thy mercy without ceasing,
That earth's vain joys to me no more be pleasing;
To do Thy will shall be my sole endeavor
Henceforth forever.

THE SERMON *"Guided to the Cross-Guided to Trust"*

THE RESPONSE *"Lord of Glory, You Have Bought Us" LSB 851*

Lord of glory, You have bought us with Your lifeblood as the price,
Never grudging for the lost ones that tremendous sacrifice.
Give us faith to trust You boldly, hope, to stay our souls on You;
But, oh, best of all Your graces, With Your love our love renew.

THE OFFERING PRAYER

THE OFFERING AND HYMN OF TRUST *"If Thou But Trust in God to Guide Thee" LSB 750*



1 If thou but trust in God to guide thee And hope in
7 Sing, pray, and keep His ways un - swerv-ing, Per - form thy



Him through all thy ways, He'll give thee strength, what-e'er be -
du - ties faith - ful - ly, And trust His Word; though un - de -



tide thee, And bear thee through the e - vil days. Who trusts in
serv-ing, Thou yet shalt find it true for thee. God nev - er



God's un - chang - ing love Builds on the rock that naught can move.
yet for - sook in need The soul that trust - ed Him in - deed.

I THE PRAYERS

- P** Lord God, in a world where it is hard to know in whom or in what we can trust, we place our trust in You. You always keep Your promises. Down through the centuries, the prophets announced Your promise to send Your Anointed One, the Messiah. When the time was right, that promise was fulfilled in Jesus.
- C** **As Jesus drew near to the hour of his death, He trusted in You, His heavenly Father, to guide His steps to the cross as the Scripture had foretold. We place our trust in Jesus alone for our salvation. Bless and guide us as we take up our crosses and follow our Savior.**
- P** Lord God, help those who are struggling with illness, pain or grief, those who are hurt, injured or grieving. Comfort them with the promises of Your Word and lead us to opportunities to serve them in Jesus' name.
- C** **Help us by Your Spirit to depend on You each day, in all of the circumstances of our lives. Teach us not to rely on our own understanding, but to trust You in all things. We know that You will guide us.**
- P** Lord Jesus, as we rely on You for help now in this earthly life, we know that we can trust in You for our eternal salvation through faith in Jesus. Our Lord has promised, "Surely I am coming soon." We look forward to the fulfillment of that promise and to life in Your presence forever.
- C** **Lord Jesus, Our God and Savior, during this Lenten season. Set the cross of Jesus before us to guide us in the way of trust. Amen.**

THE LORD'S PRAYER

- C** **Our Father who art in heaven, hallowed be thy name, thy kingdom come, thy will be done on earth as it is in heaven. Give us this day our daily bread; and forgive us our trespasses as we forgive those who trespass against us; and lead us not into temptation, but deliver us from evil. For thine is the kingdom and the power and the glory forever and ever. Amen.**

THE BENEDICTION

- P** Trust in the Lord with all your heart, and do not lean on your own understanding.
- C** **In all your ways acknowledge Him, and He will make straight your paths.**
- P** The grace of the Lord Jesus Christ and the love of God and the fellowship of the Holy Spirit be with you all.
- C** **Amen.**

THE SILENT PRAYER

O Lord, I want to trust You in every situation and every season of my life, for You have promised to take all things, whether good or evil, and use them together for good, not only for my good and the good of others, but also so that Your name may be glorified through it. Amen.

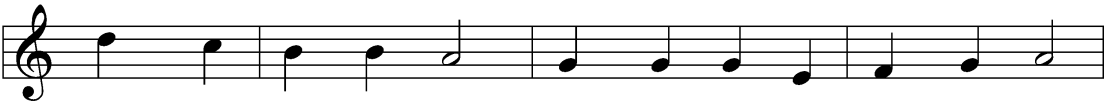
THE CLOSING HYMN "Jesus, Grant That Balm and Healing" LSB 421



1 Je - sus, grant that balm and heal - ing In Your ho - ly
4 Ev - 'ry wound that pains or grieves me By Your wounds, Lord,
5 O my God, my rock and tow - er, Grant that in Your



wounds I find, Ev - 'ry hour that I am feel - ing Pains of
is made whole; When I'm faint, Your cross re - vives me, Grant - ing
death I trust, Know - ing death has lost its pow - er Since You



bod - y and of mind. Should some e - vil thought with - in
new life to my soul. Yes, Your com - fort ren - ders sweet
crushed it in the dust. Sav - ior, let Your ag - o - ny



Tempt my treach-'rous heart to sin, Show the per - il, and from
Ev - 'ry bit - ter cup I meet; For Your all - a - ton - ing
Ev - er help and com - fort me; When I die be my pro -



sin - ning Keep me from its first be - gin - ning.
pas - sion Has pro - cured my soul's sal - va - tion.
tec - tion, Light and life and res - ur - rec - tion.

THE POSTLUDE

Messiah Lutheran Church

1801 West Plano Parkway ♦ Plano, Texas 75075



Worship Services available on the Live Stream/YouTube

- ♦ Sunday Worship in the Sanctuary: 8:30 & 11:00AM
(Holy Communion every Sunday in Lent)
- ♦ Sunday School & Adult Bible Class: 9:45-10:40AM
- ♦ Wednesday Lent Family Worship in the Chapel 6:00PM
Wednesday Lent Worship in the Sanctuary 7:00PM

MESSIAH LUTHERAN

Church Office: 972-398-7500
Lambs' Early Childhood Center Office: 972-398-7560

Rev. Dr. Victor J. Kollmann, Senior Pastor
Rev. Matthew Lee, Associate Pastor
Ellen Thorne, Celebration Ministries
Amy Plenger, Children's Ministries
Don Johnson, Property Ministries
Kim Johnson, Administrative Assistant
Melinda Kellerman, Children's Ministry Assistant
Carmen Rowan, "The Lamp" Gift Shop Manager

Rev. James Otte, Associate Pastor
Amy Myers, Lambs' ECC Director
Dorothy Sherrod, Music Ministries
Jodi Sorenson, Youth Ministries
Danny Ladishew, Technology Director
Kathy Mardis, Executive Secretary
Todd Smith, Gym Manager
Cyndi Scruggs, Receptionist

E-mail: messiah@messiahlutheran.com

Website: www.messiahlutheran.com

♦ *A Congregation of the Lutheran Church-Missouri Synod* ♦

Those Who Served in Worship Tonight

PREACHER	Rev. Matt Lee
ELDERS	Jason Looney, Mark Fischer
ORGANIST	Teresa Logue
A/V TEAM	Danny Ladishew, Chuck Tolsma

Music Copyright Information

Hymns and Liturgy: Concordia Publishing House. Used by permission. CCLI License #1057398